

锂离子电池用压延铜箔

Tough Pitch铜箔/铜合金箔 HS1200

Rolled Copper Foil for Li-ion Battery: Tough Pitch Copper Foil and Copper Alloy Foil HS1200

箔厚: Thickness: 6um、7um、8um、9um、10um、12um~

- HS1200是提高Tough Pitch铜箔的软化耐热性的高强度铜合金箔。

HS1200 is a high strength copper alloy foil that has excellent heat resistance in terms of softening.

- 低粗度压延铜箔在超音波焊接性方面得以改善

The flat surface of rolled copper foil is suitable for ultra-sonic welding.

タフピッチ銅箔、HS1200特性一覧 Properties of copper foils

銅箔 Copper foil	板厚 Thickness (μm)	板厚偏差 Thickness deviation (%)	化学成分 Chemical composition (wt%)	引張強さ Tensile strength (MPa)	熱処理後 のTS TS after annealed, Loss (%)	伸び Elongation (%)	表面粗さ Roughness, Rz (μm)
Tough Pitch Copper	6~	± 1	Cu>99.9	450	50	1~2	< 1.0
HS1200	7~	± 1	Cu-0.12Sn	550	<10	1~2	< 1.0

スリット時に最大幅670mm、最大長さ8000mまで調整可能です。

Foil width and length can be customized up to 670mm and 8,000m.

※ TS: 引張強さ

熱処理条件 250°C×1時間

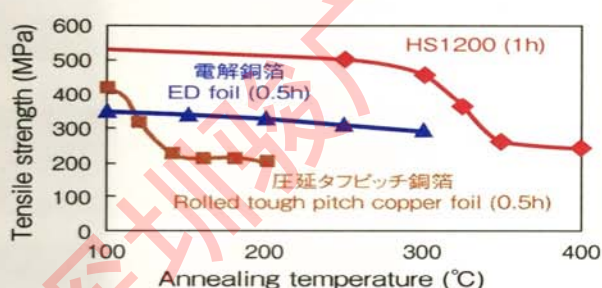
上記値は代表値であり、保証値とは異なります。

※ TS: tensile strength

Anneal condition: 250 degrees Celsius ×1h

All values are representative data, not guaranteed

軟化特性 Softening curves



表面平滑性 Surface flatness

表面
Front side surface

Rz=0.48 μm



裏面
Back side surface

Rz=0.50 μm

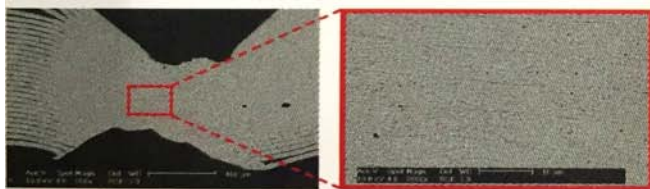


圧延銅箔は両面の表面粗さが同一であり、平滑性に優れています。

The surface roughness of rolled copper foil is very flat. Furthermore, it is identical on both sides.

超音波溶接部断面観察 Cross section image of welded copper foil

HS1200 (10 μm , 30 sheets)



電解銅箔 / ED foil (10 μm , 30 sheets)

